

# Triceratops

**Classification:** Ornithischia Ceratopsia

**Size:** Length approx. 10 to 12m

Weight approx. 10 to 15t

**Period:** Cretaceous

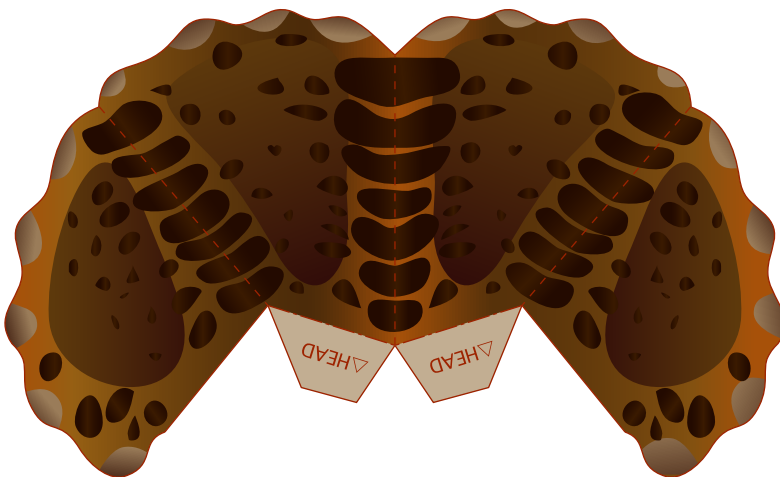
Triceratops' name means "three-horned face". Triceratops is classed as one of the frilled Ceratopsians of the order Ornithischia, which have bird-like bone structures.

This giant herbivore walked on four legs and would have used its horns to fight off attackers. The frills were likely to have been used to regulate the animal's body temperature, or perhaps in territorial fights among males, but no-one really knows for sure.

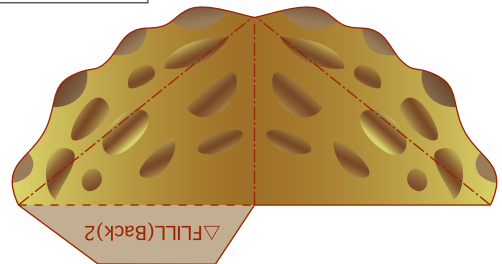
Dinosaurs lived about 225 million years ago, in the Mesozoic era, which is made up of the Triassic, Jurassic and Cretaceous periods. It is thought likely that the dinosaurs were wiped out around 65 million years ago, when many plants and animals died as a result of climatic changes brought about by a meteor striking the earth, but no one knows what really happened.



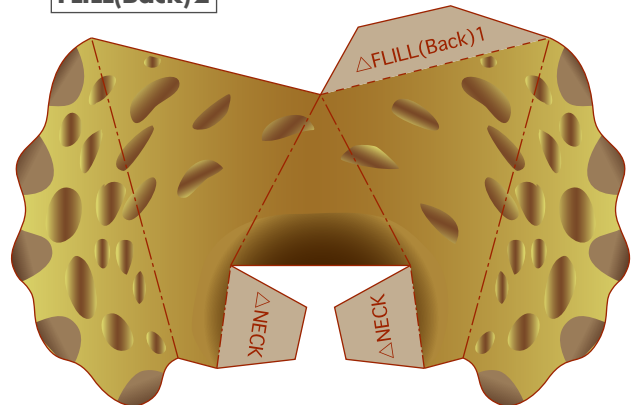
FLILL(Front)



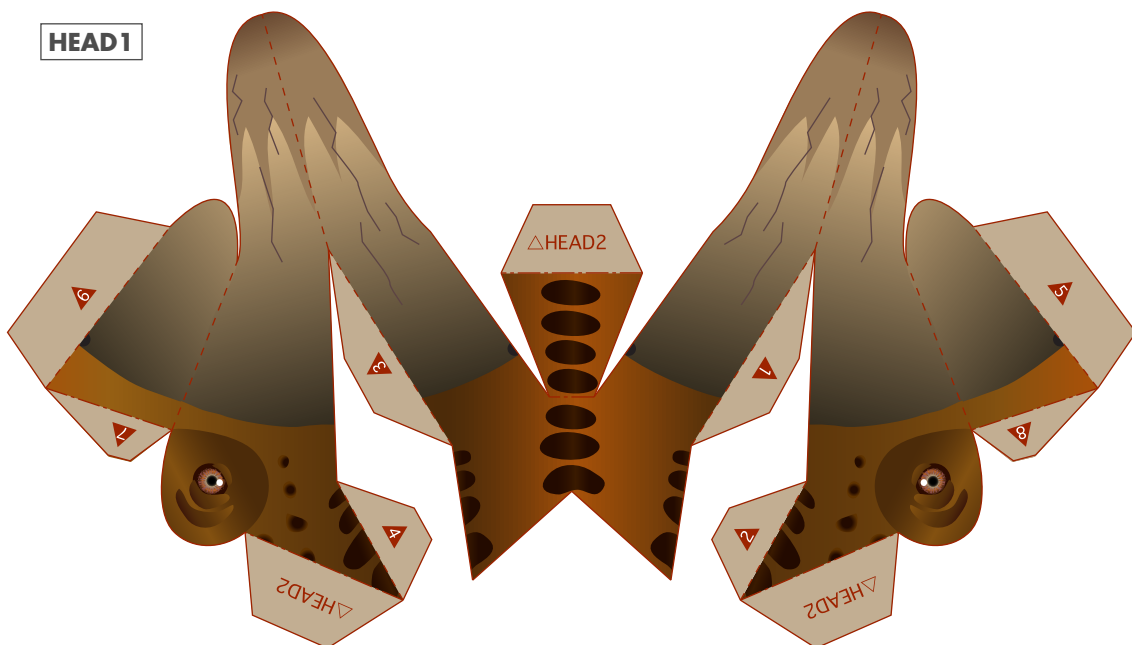
FLILL(Back)1



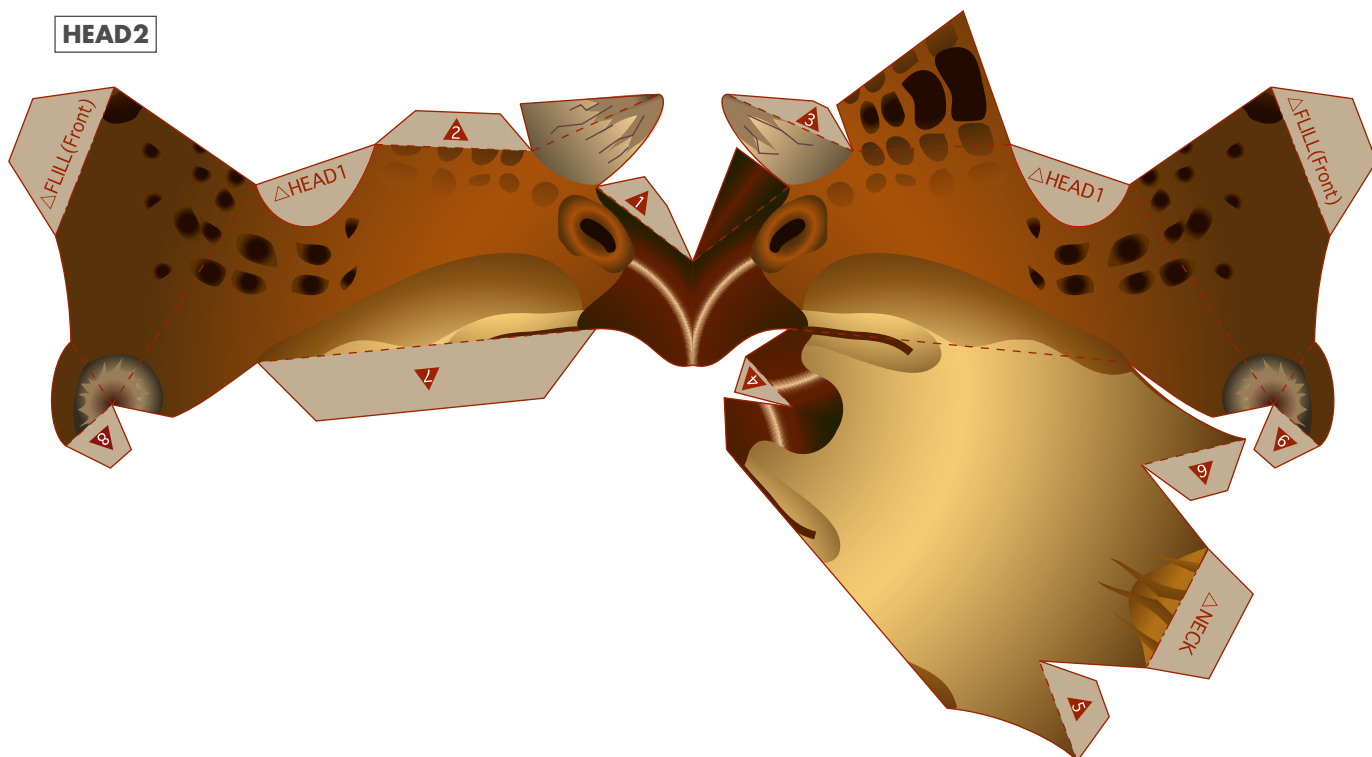
FLILL(Back)2

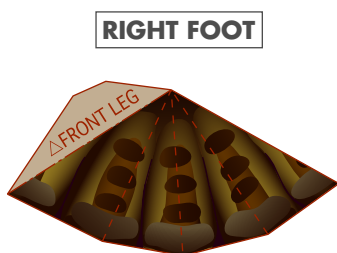
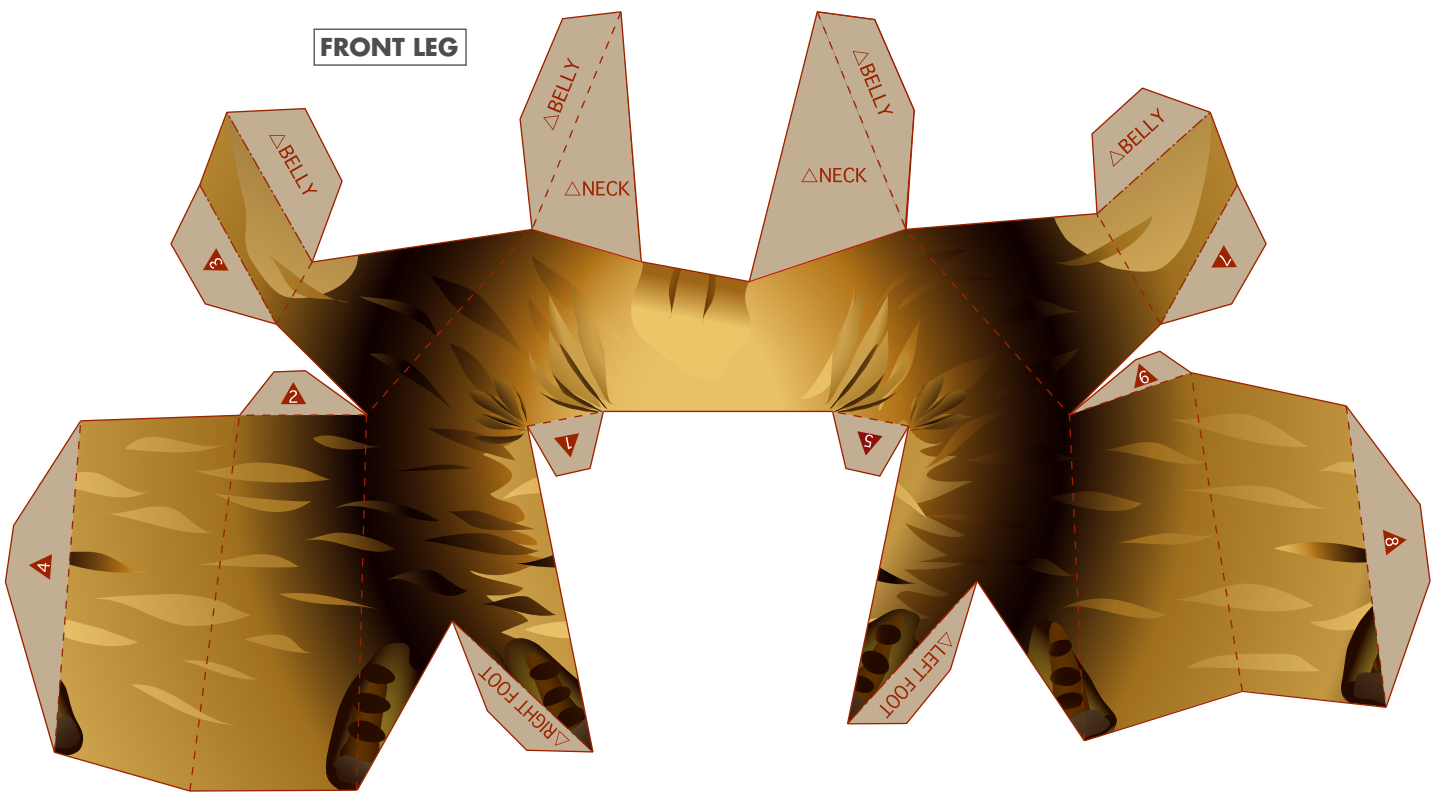
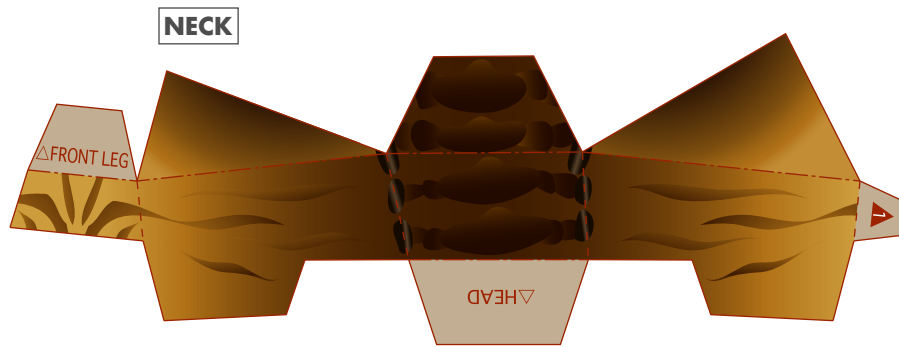


HEAD1

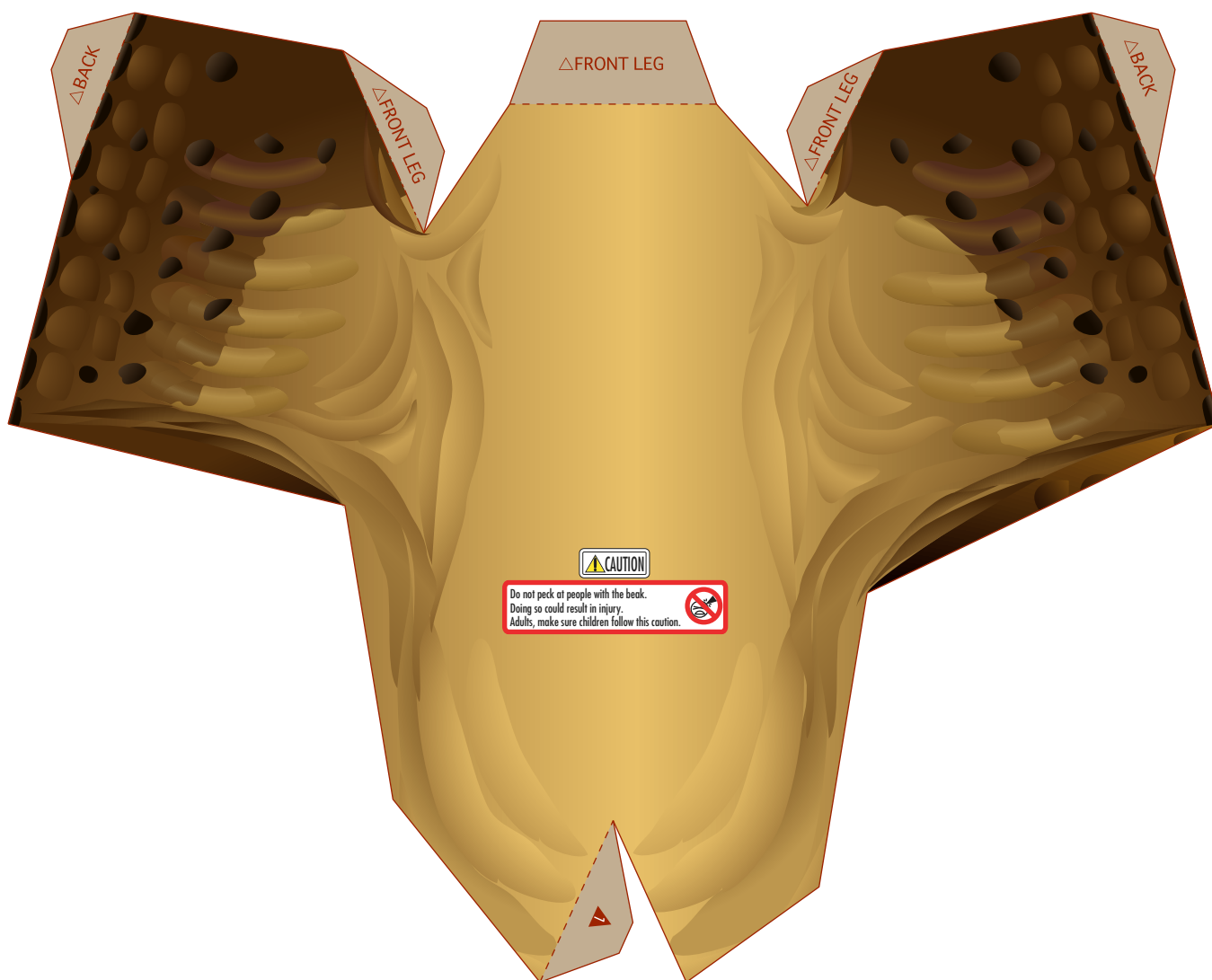


HEAD2



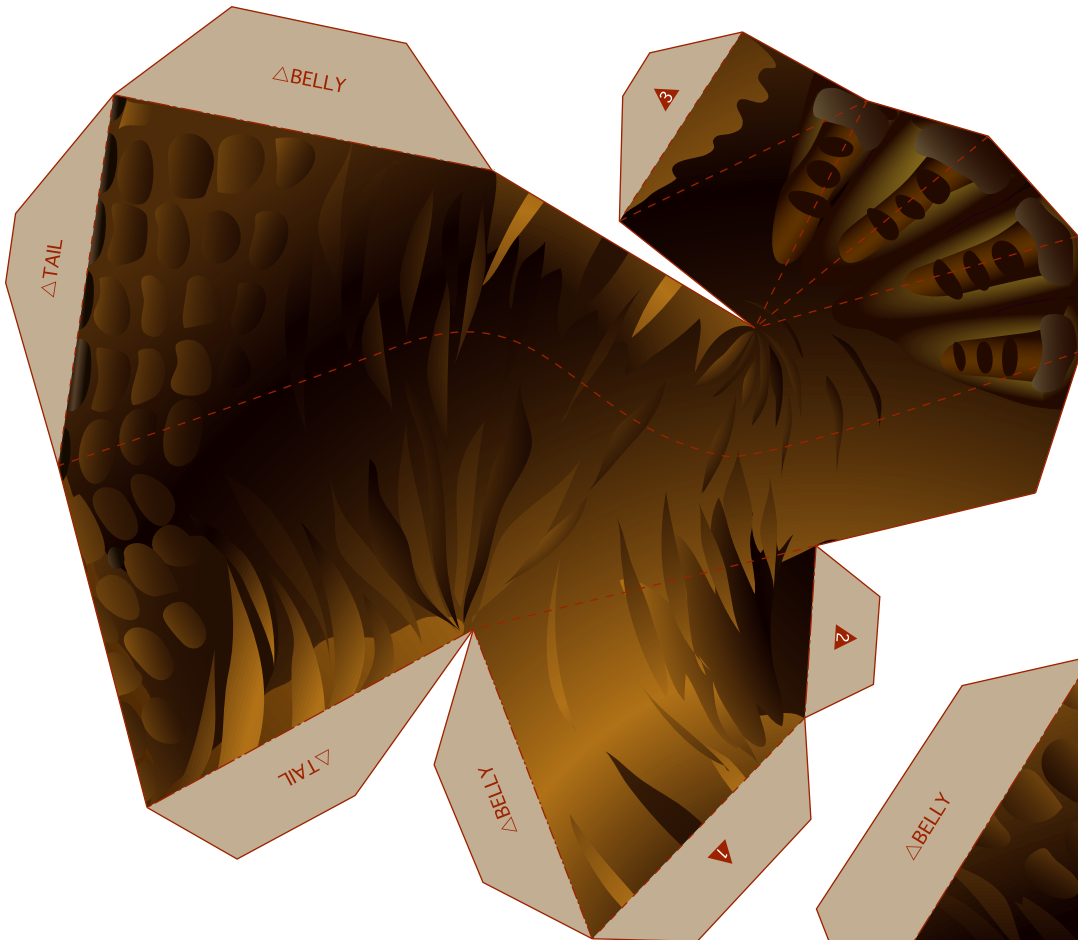


BELLY

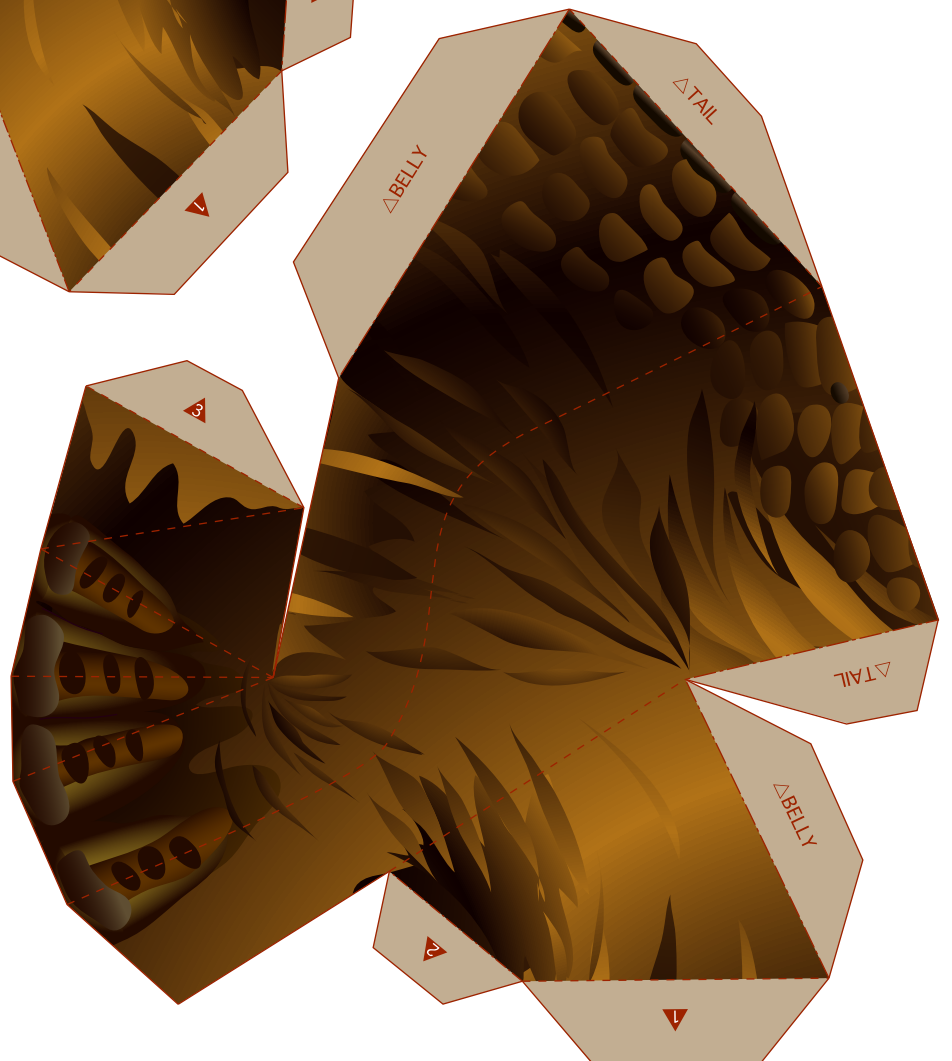


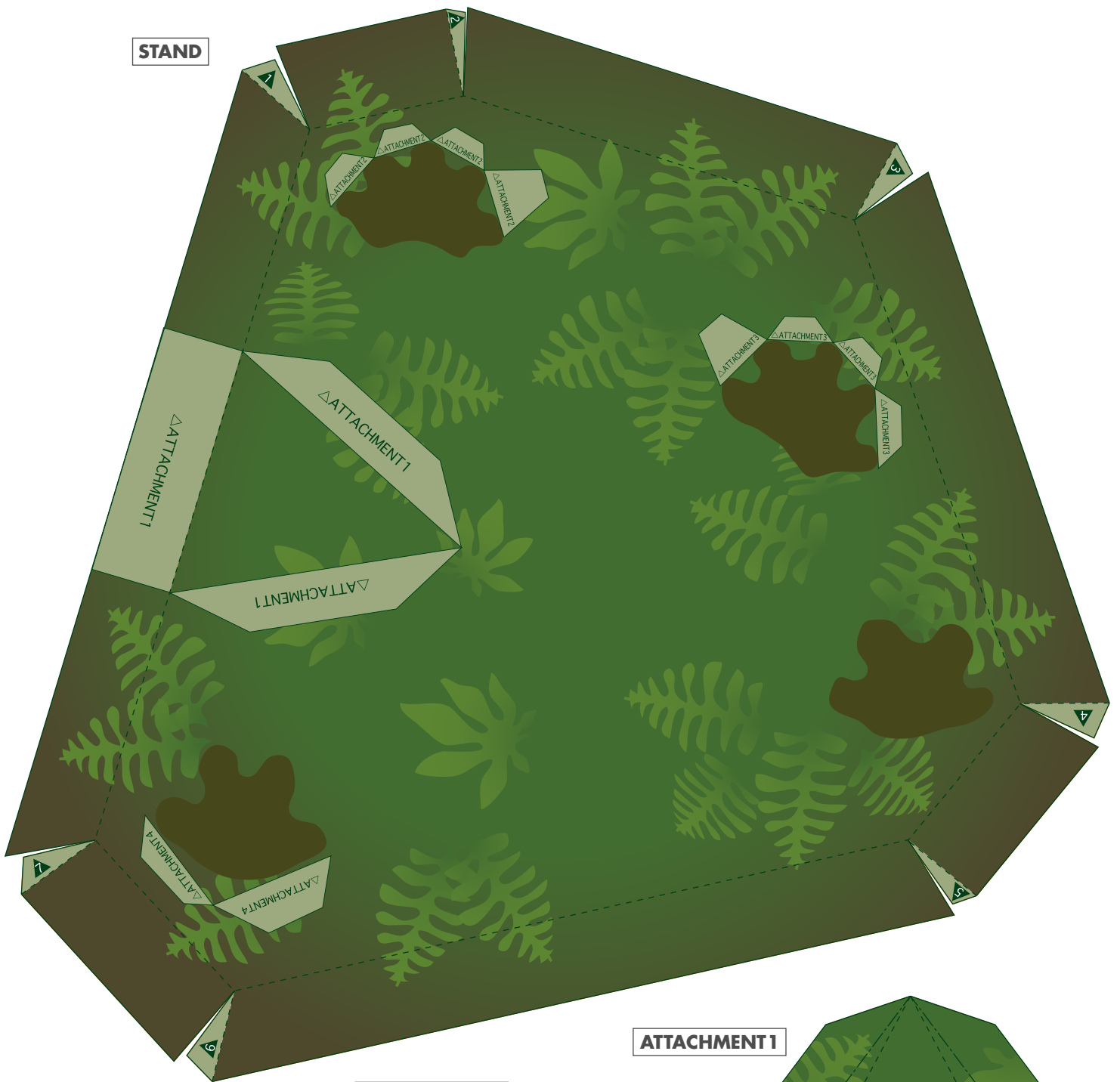


RIGHT HIND LEG

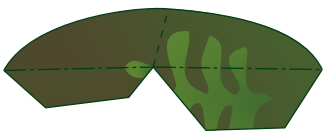


LEFT HIND LEG

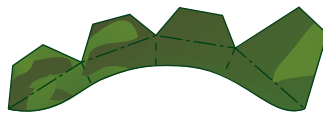




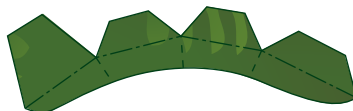
ATTACHMENT 4



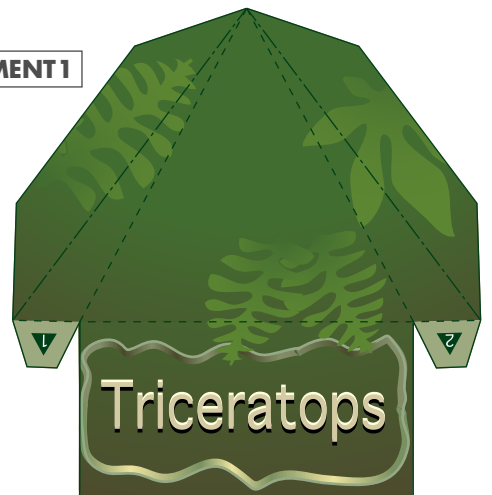
ATTACHMENT 2



ATTACHMENT 3



ATTACHMENT 1



## Triceratops

**Classification:** Ornithischia Ceratopsia

**Size:** Length approx. 10 to 12m

Weight approx. 10 to 15t

**Period:** Cretaceous

Triceratops' name means "three-horned face". Triceratops is classed as one of the frilled Ceratopsians of the order Ornithischia, which have bird-like bone structures.

This giant herbivore walked on four legs and would have used its horns to fight off attackers. The frills were likely to have been used to regulate the animal's body temperature, or perhaps in territorial fights among males, but no-one really knows for sure.

Dinosaurs lived about 225 million years ago, in the Mesozoic era, which is made up of the Triassic, Jurassic and Cretaceous periods. It is thought likely that the dinosaurs were wiped out around 65 million years ago, when many plants and animals died as a result of climatic changes brought about by a meteor striking the earth, but no one knows what really happened.



### ★ Assembly Instructions

- 1) Carefully cut out the parts.
- 2) Make mountain folds and valley folds along the dotted lines, as indicated by the directions.
- 3) Assemble the parts in the order shown by the numbers on the glue tabs. (Read the Explanation of Symbols for more information.)
- 4) Attach the parts in order. (Read the Explanation of Symbols for more information.)
- 5) Your Paper craft model is finished!

### ★ Tools

Scissors, glue (We recommend craft glue.)

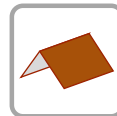
### ★ Caution

Keep glue away from small children.  
Be careful not to cut your fingers when using scissors.  
Fold the folding lines before gluing.

### ★ Explanation of Symbols.



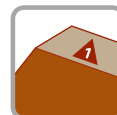
————— Cut line



- - - - - Mountain fold



- - - - - Valley fold



△ **Numbered glue tabs**  
Glue the parts together in the order indicated by the numbers.

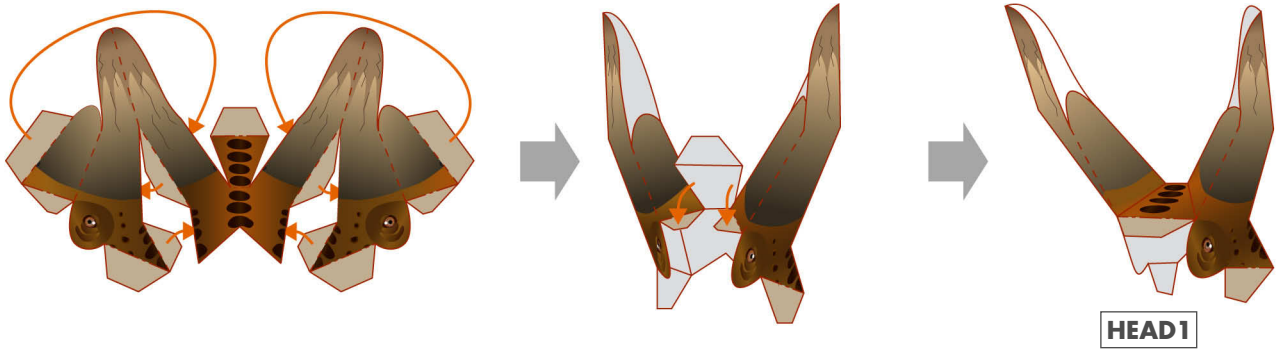


△ **Glue tabs with symbols and part names.**  
These tabs are to be glued onto the matching parts, which name is indicated on the tab.

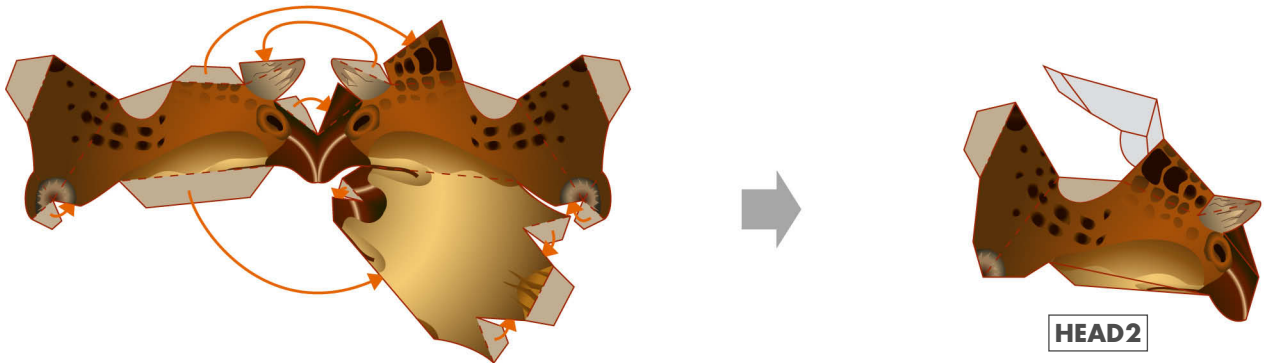


★ Assemble the head(1/2)/flill(front/back)/neck

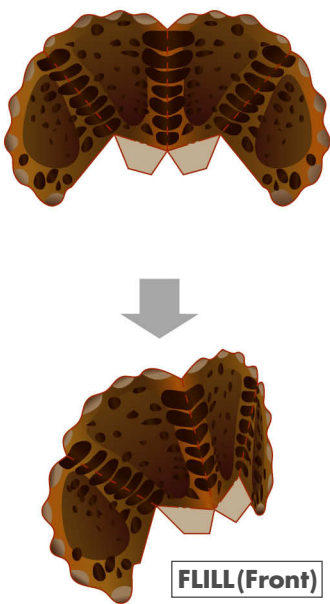
1 Head1



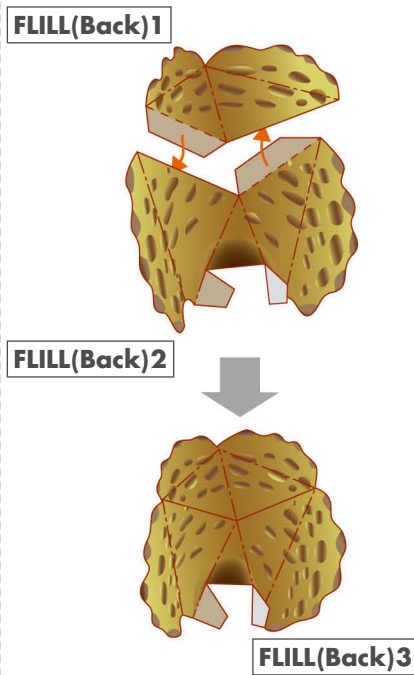
2 Head2



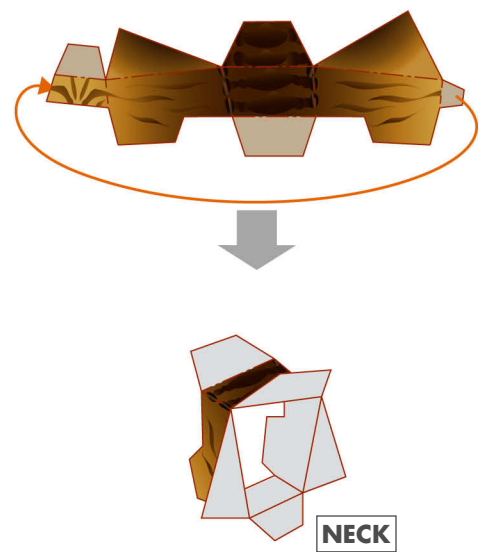
3 Flill(front)



4 Flill(back)

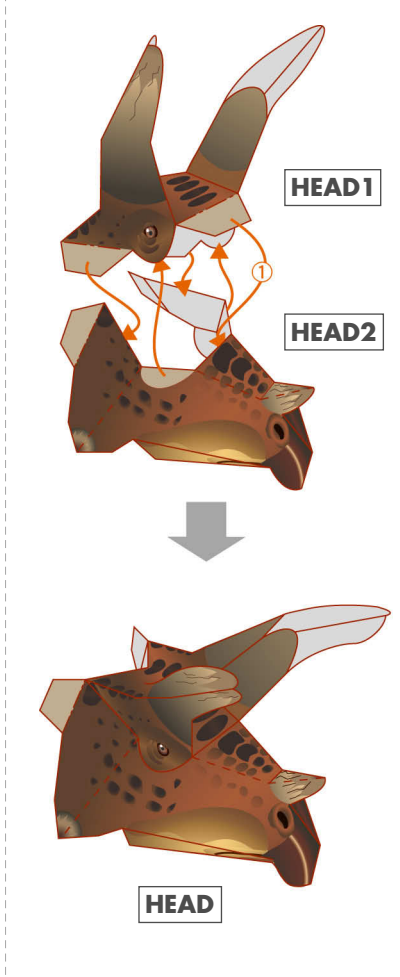


5 Neck

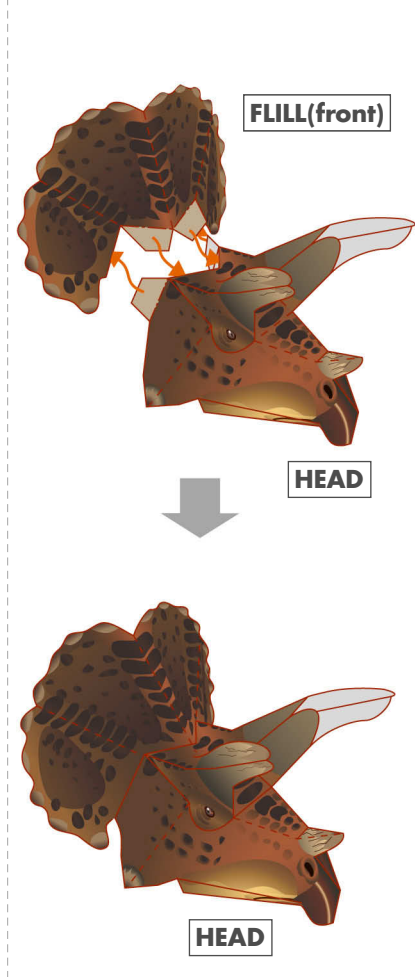


**★ Assemble the head**

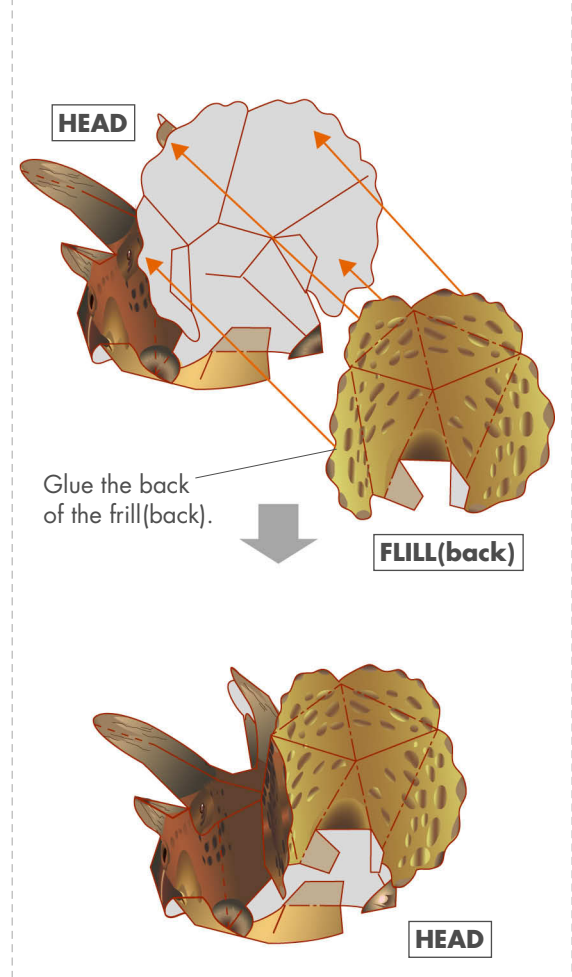
**6 Glue head1 to head2**



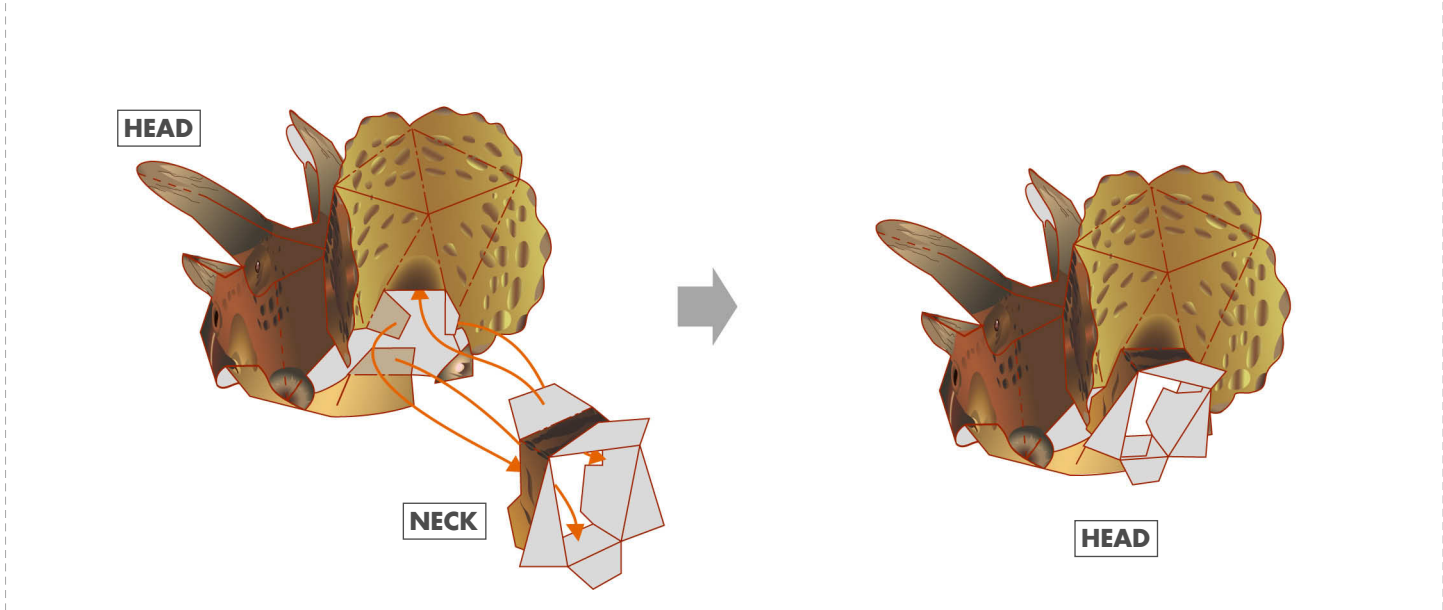
**7 Glue the head to fill(front)**



**8 Glue the head to fill(back)**

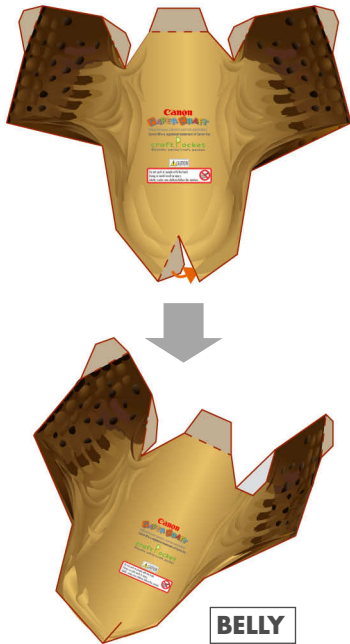


**9 Glue the head to the neck**

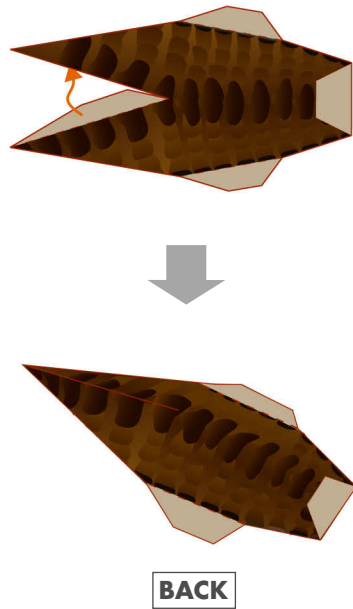


★ Assemble belly/back/tail/front leg/hind leg(right/left)

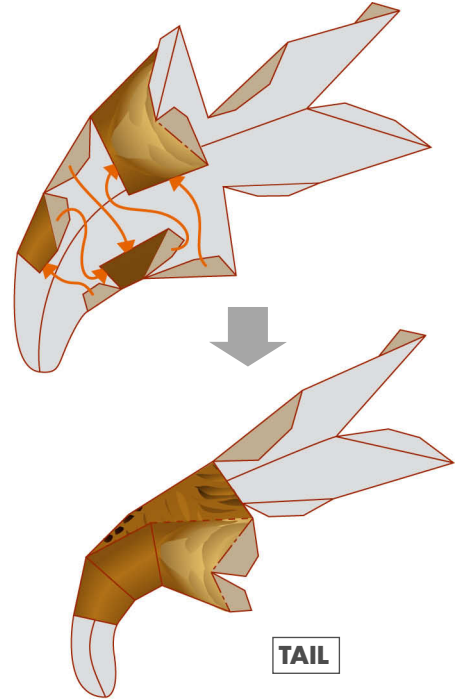
10 Belly



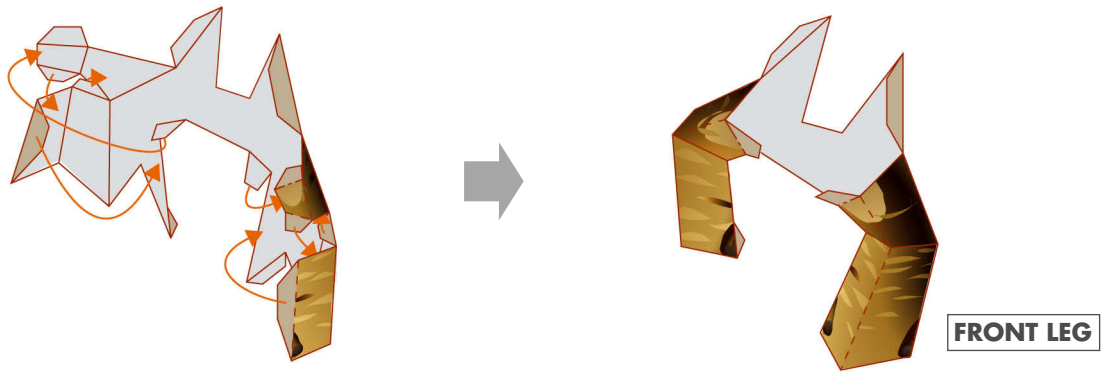
11 Back



12 Tail

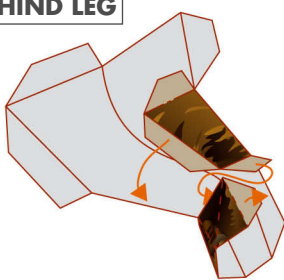


13 Front leg

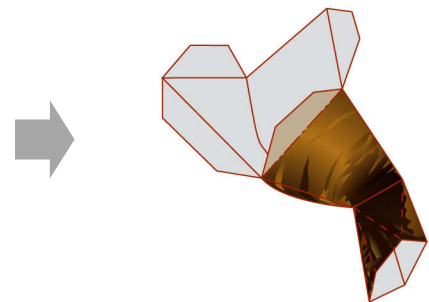


14 Hind leg

**RIGHT HIND LEG**



The left hind leg is the same.



**★ Assemble the body**

**15 Glue the front leg to the back**



**16 Glue the belly to the hind leg(right/left)**

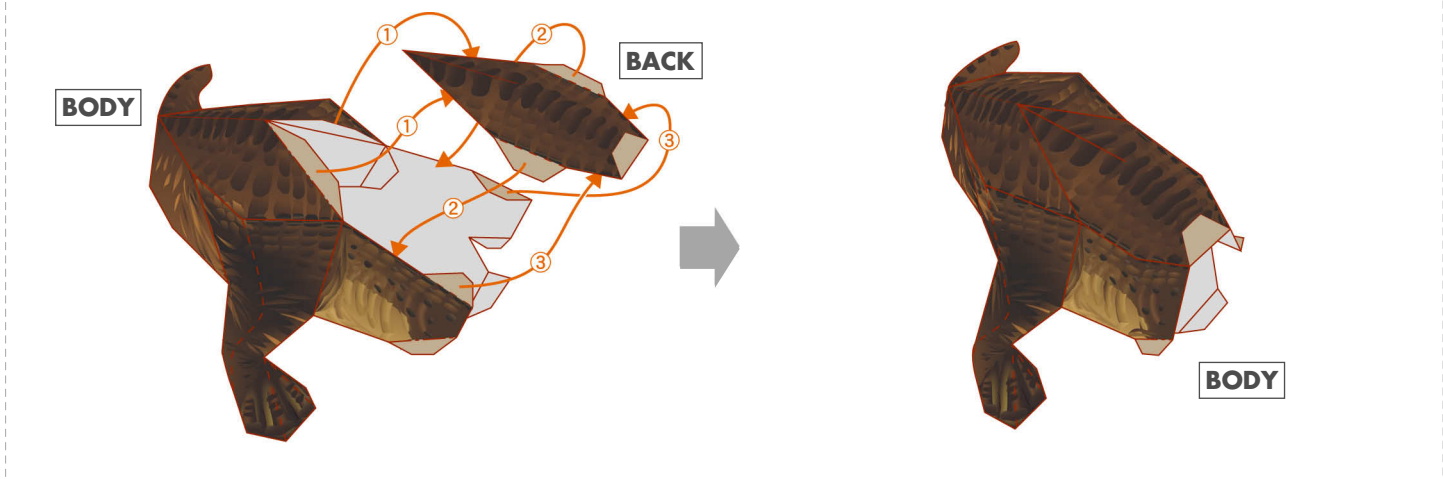


**17 Glue the body to the tail**

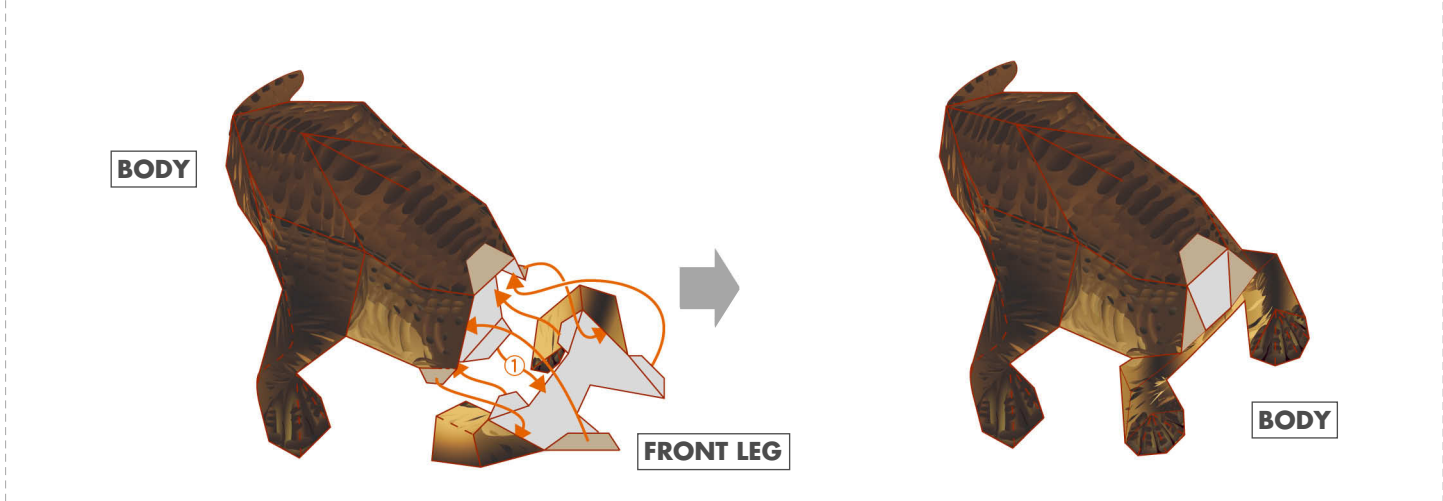


**★ Put it all together**

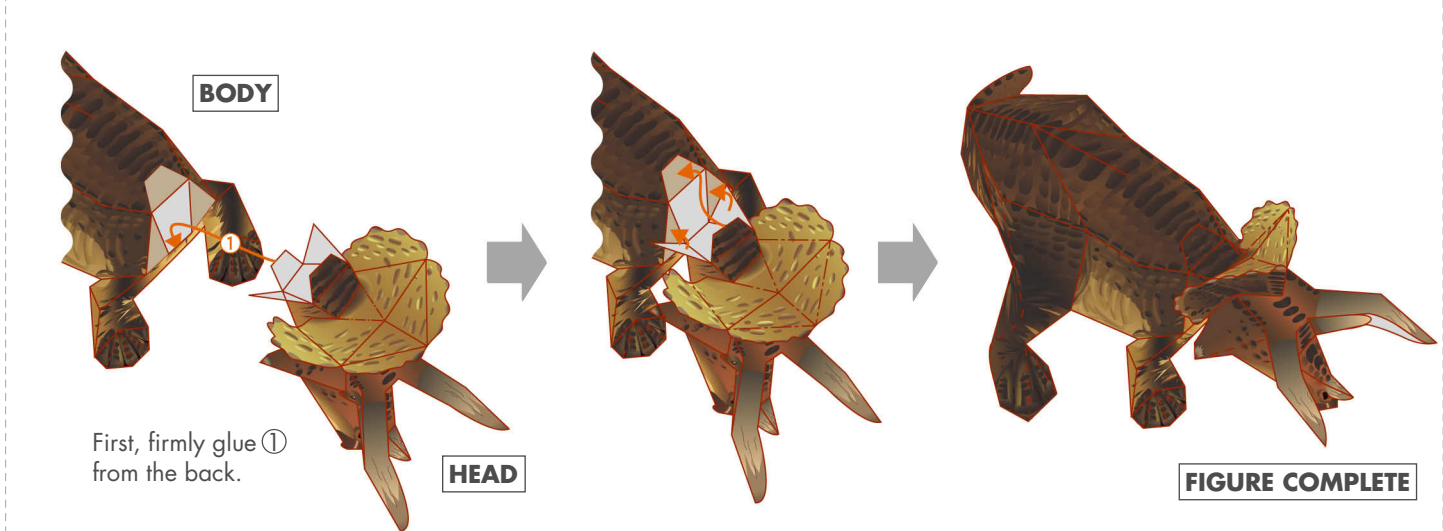
**18 Glue the body to the head**



**19 Glue the body to the front leg**

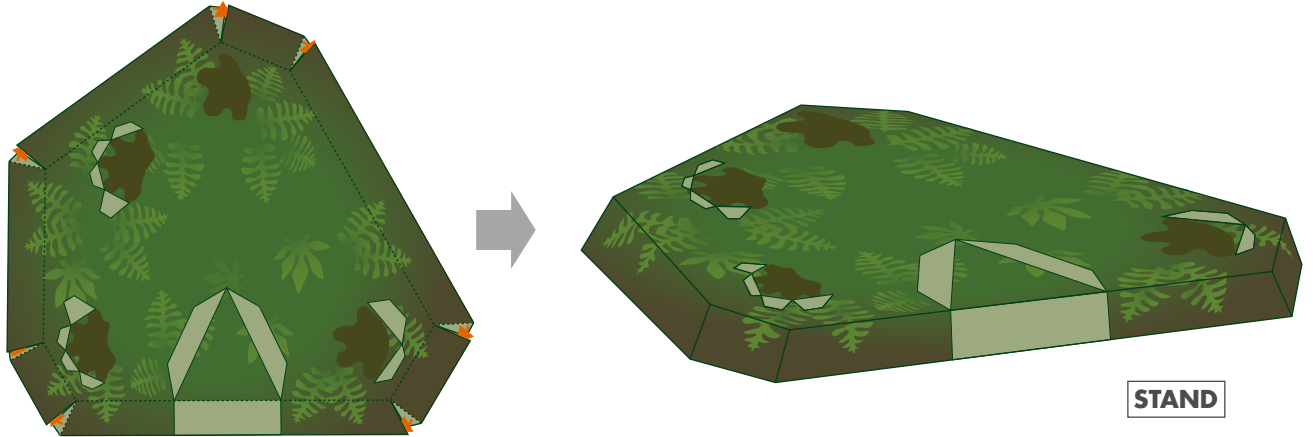


**20 Glue the body to the head**

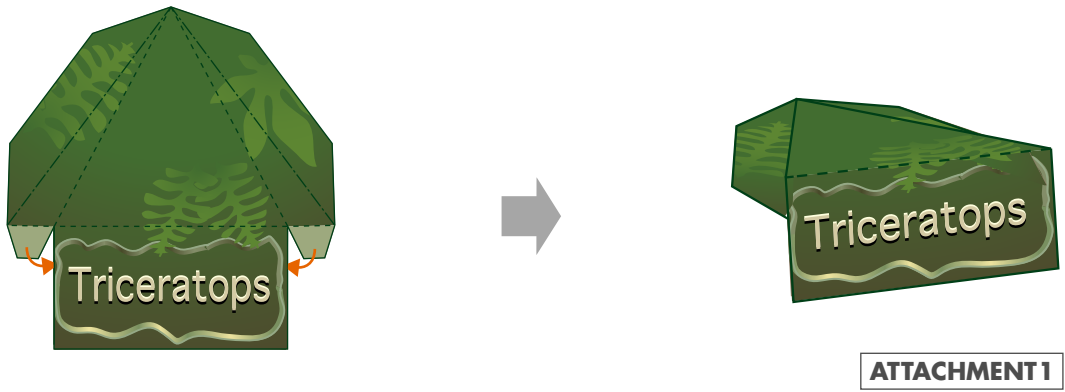


★ Assemble the stand (1)

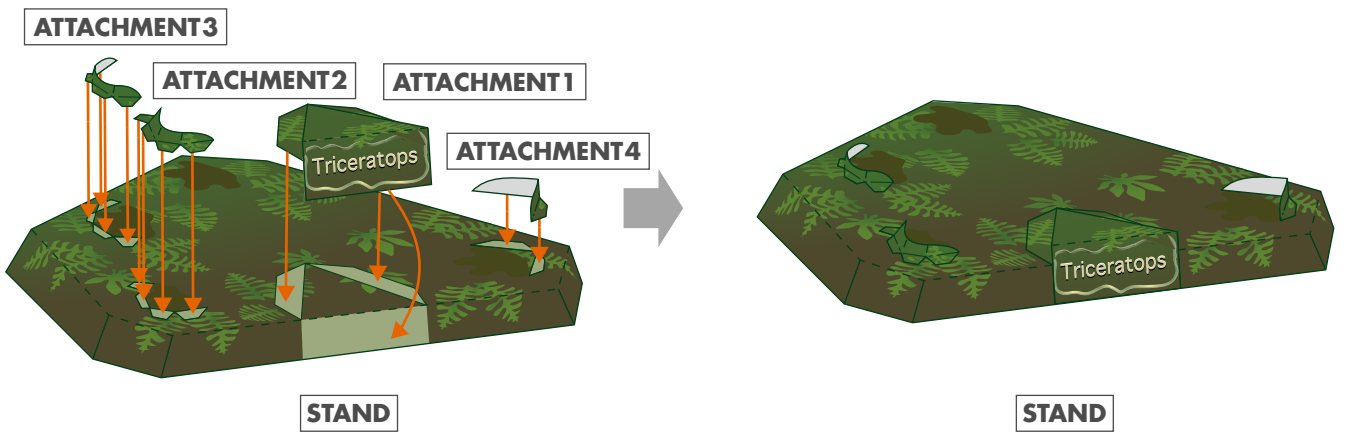
21 Stand



22 Attachment 1

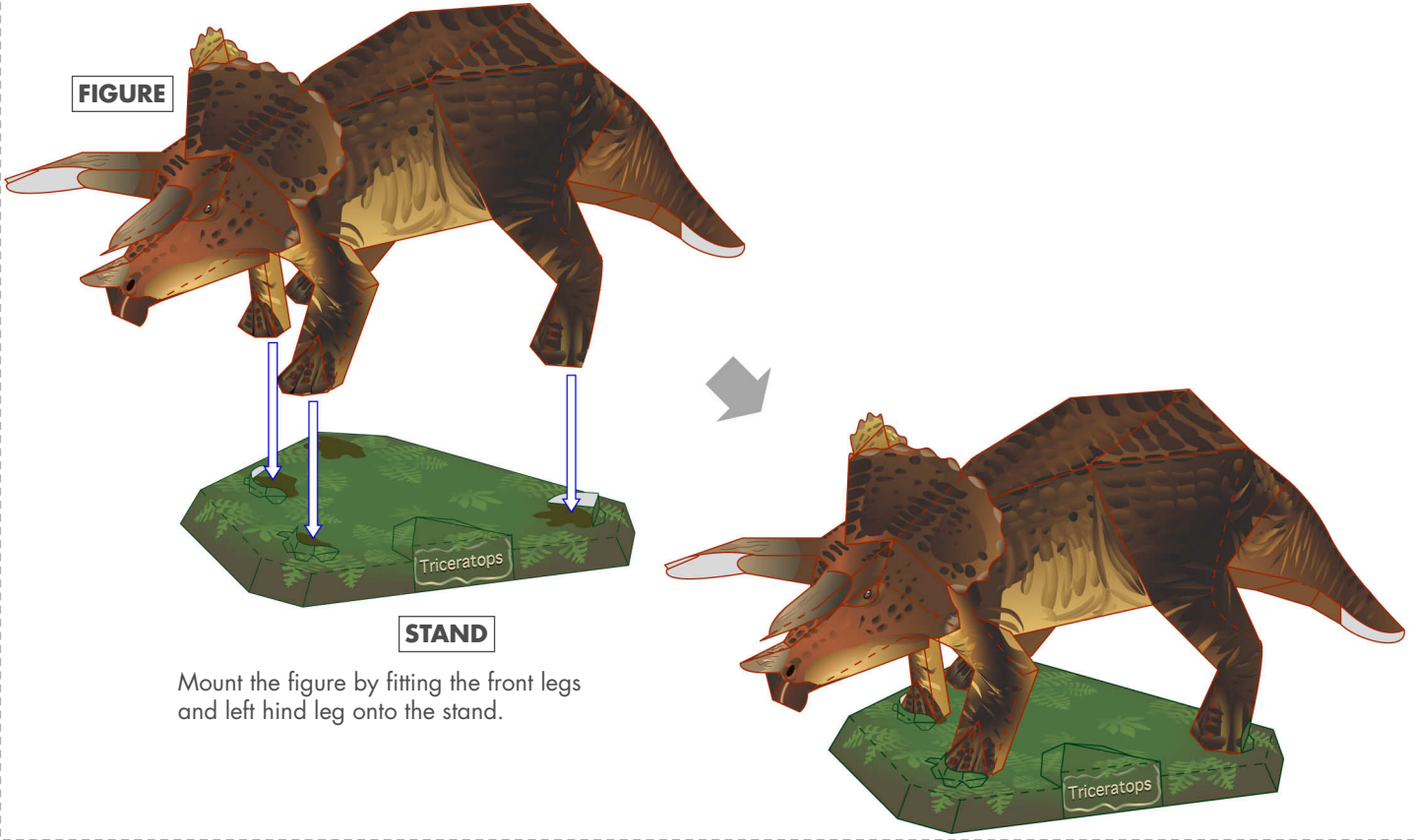


23 Stand assembly



★ Assemble the stand (2)

24 Mount the figure on the stand



★ Complete!

